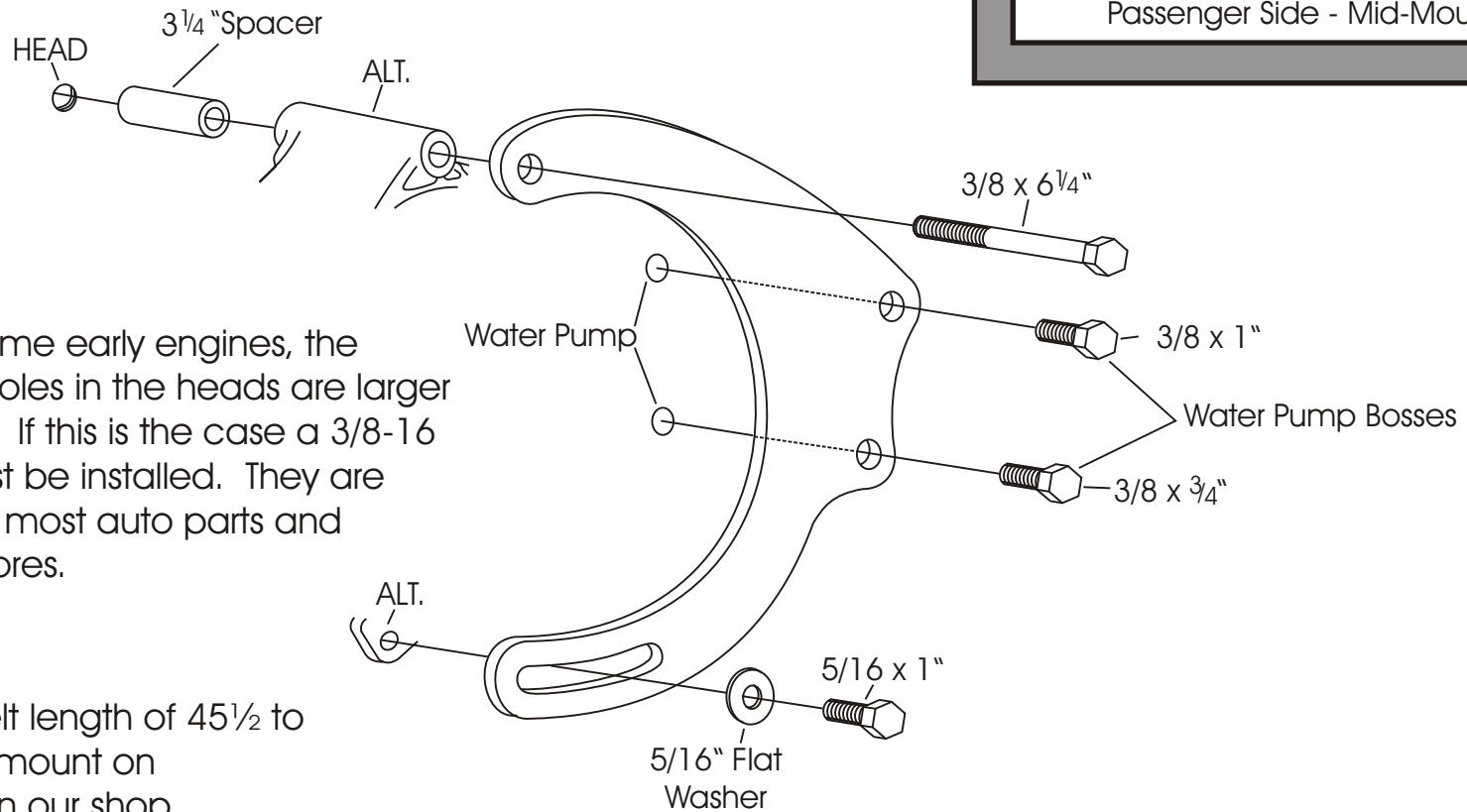




ALTERNATOR MOUNT 225R

Big Block Chevy - Long Water Pump
Passenger Side - Mid-Mount



NOTE: On some early engines, the accessory holes in the heads are larger - 7/16" hole. If this is the case a 3/8-16 heli-coil must be installed. They are available at most auto parts and hardware stores.

We use a belt length of 45 1/2 to 46" with this mount on installations in our shop. However; this can vary with the diameter of your pulleys.

As with any part of this nature, make sure it fits your application before painting or plating. Parts that have been painted, plated, or modified may not be returned.

ALTERNATOR
MOUNT

225R

Big Block Chevy - Long Water Pump
Passenger Side - Mid-Mount

ALAN GROVE COMPONENTS, INC.
27070 METCALF ROAD
LOUISBURG, KS 66053