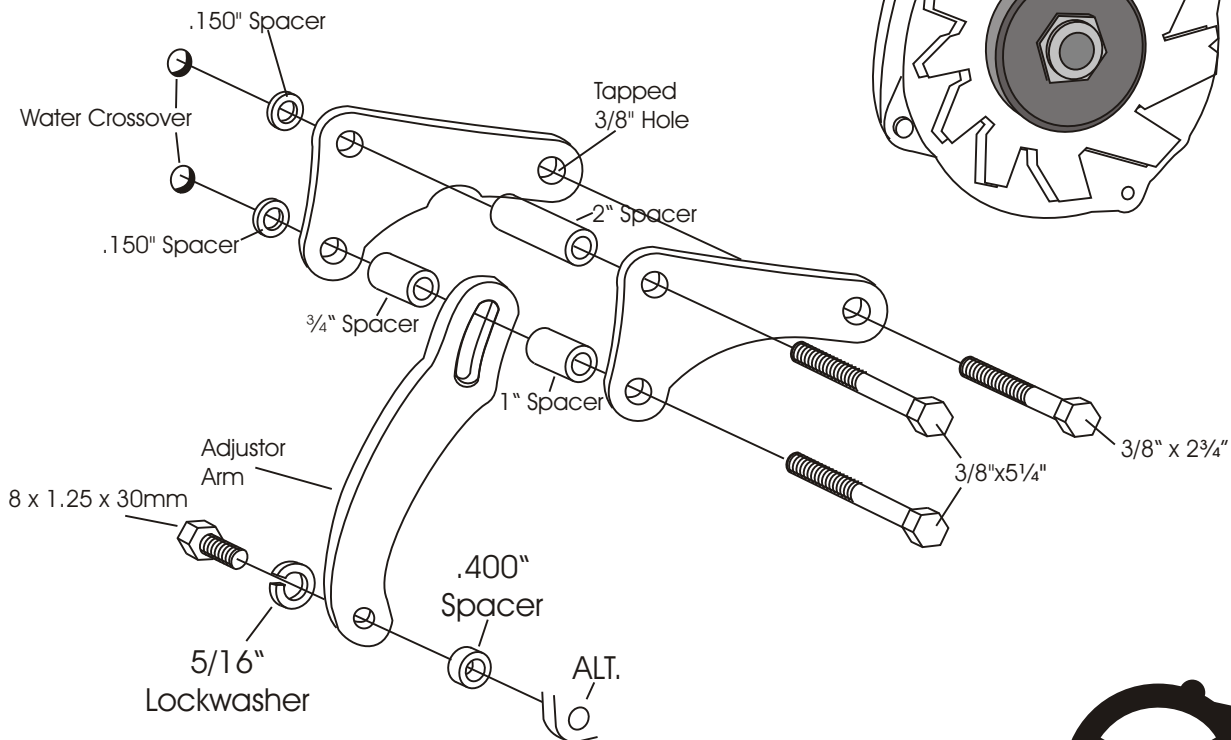


MID-MOUNT ALTERNATOR BRACKET 239L

Buick Nailhead 401/425
Driver's Side



This bracket is designed to be used with the small CS 130 G.M. Alternators with the threaded mounting ear in the 2 o' clock position.

(We use a belt length of 41 1/4 to 42" with this mount on installations in our shop. However; this can vary with the diameter of your pulleys.)

As with any part of this nature, make sure it fits your application before painting or plating. Parts that have been painted, plated, or modified may not be returned.

MID-MOUNT
ALTERNATOR
BRACKET
239L

Buick Nailhead 401/425
Driver's Side

ALAN GROVE COMPONENTS, INC.
27070 METCALF ROAD
LOUISBURG, KS 66053