

# Alternator Mount

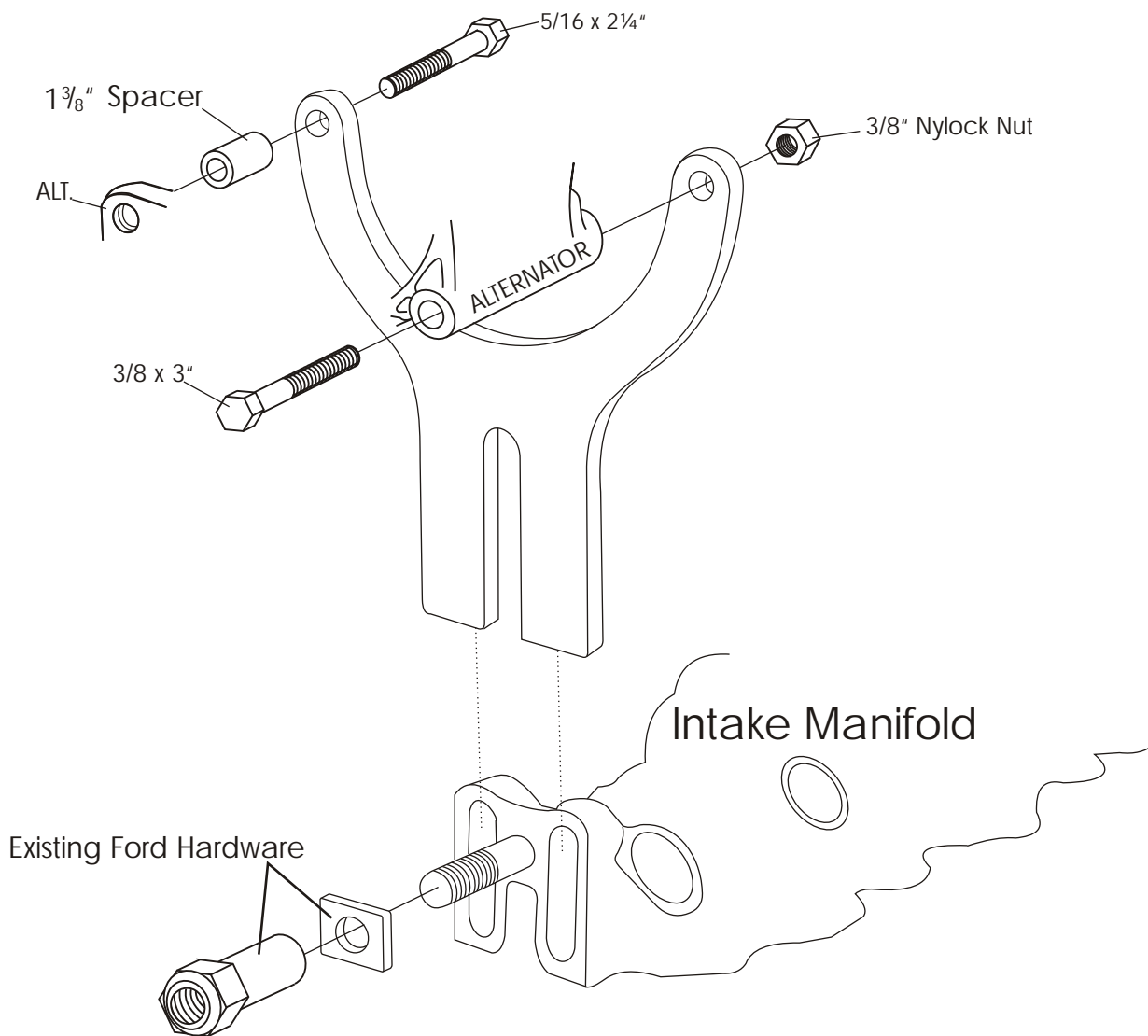
## Part# 243

### Flathead Ford/Mercury Late Narrow Belt

1950-53 Car



We use a belt length of 53" in our shop for the alternator drive belt. (NAPA part# 13333), and a fan belt length of 42 1/8" (NAPA part# 7417). These lengths may vary depending on your pulley diameters and application.



Alternator  
Mount  
Part# 243

Flathead Ford/Mercury  
Late Narrow Belt

1950-53 Car

ALAN GROVE COMPONENTS, INC.  
27070 METCALF ROAD  
LOUISBURG, KS 66053